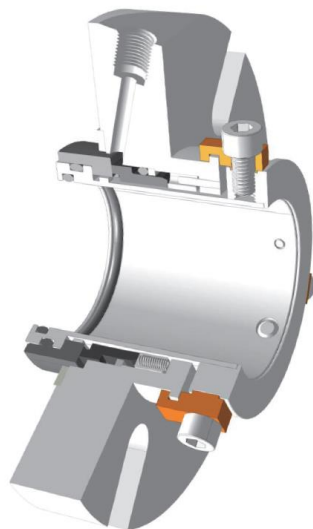




AIGI 318T

Sello mecanico cartucho simple



Características

- Resortes aislados del fluido para evitar obstrucciones.
- Diseño balanceado hidráulicamente para una baja generación de calor.
- Sello cartucho compacto.
- Las piezas de accionamiento integrales no se aflojan ni se caen proporcionando un torque constante.

Aplicaciones

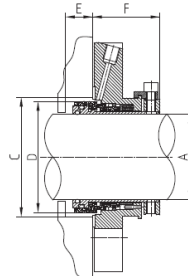
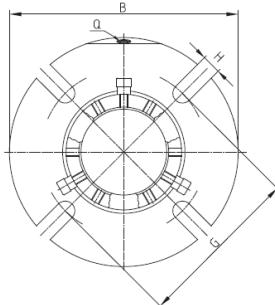
- Agua, aceite, abrasivos, lodos, corrosivos leves.

Límite de operación	Valor
Max. Presión	30 kg/cm ²
Max. Temperatura	150°C
Max. Velocidad	20 m/s

Propiedad	Valor
Material	304SS
Caras sellado	CB, SC, TC
Resortes	Hastelloy C
O 'Ring	FKM, E. P
Configuración	Solo lavado (enfriamiento/desagüe opcional)



Dimensiones AIGI 318T



PATENTED

AIGI 318T

Unidad: mm

A	B Max.	C Min.	C Max.	D Max.	E Min.	F Max.	G Min. (M8)	G Min. (M10)	G Min. (M12)	G Min. (M16)	H	Q
30	124	49	57	48	16	47	76	78	80	-	13.5	G1/8"
35	128	54	62	52	16	47	80	82	84	-	13.5	G1/8"
40	134	59	68	58	16	47	86	88	90	-	13.5	G1/8"
45	140	64	73	63	16	47	92	94	96	-	13.5	G1/8"
48	139	67	74	66	16	47	92	94	96	-	13.5	G1/8"
50	145	69	78	68	16	47	97	99	101	-	13.5	G1/8"
55	150	74	83	73	16	47	102	104	106	-	13.5	G1/8"
60	160	79	91	78	16	47	112	114	116	-	13.5	G1/8"
65	194	92	102	90	22	56	-	132	134	138	17.5	G1/4"
70	197	95	105	93	22	56	-	135	137	141	17.5	G1/4"
75	203	100	113	99	22	56	-	141	143	147	17.5	G1/4"
80	207	105	116	103	22	56	-	144	146	150	17.5	G1/4"
85	213	110	122	109	22	56	-	151	153	157	17.5	G1/4"
90	216	115	125	113	22	56	-	154	156	160	17.5	G1/4"
95	222	120	131	118	22	56	-	160	162	166	17.5	G1/4"
100	229	127	138	125	22	56	-	167	169	173	17.5	G1/4"
105	232	131	133	129	22	56	-	170	172	176	17.5	G1/4"
110	236	136	148	134	22	56	-	174	176	180	17.5	G1/4"
115	242	141	143	139	22	56	-	180	182	186	17.5	G1/4"
120	248	145	158	144	22	56	-	186	188	192	17.5	G1/4"

AIGI 318T

unidad: pulgada

A	B Max.	C Min.	C Max.	D Max.	E Min.	F Max.	G Min. (3/8")	G Min. (1/2")	G Min. (5/8")	H	Q
1.125	4.88	1.93	2.24	1.89	0.63	1.85	3.07	3.21	-	0.53	G1/8"
1.250	5.04	2.13	2.44	2.05	0.63	1.85	3.23	3.37	-	0.53	G1/8"
1.375	5.04	2.13	2.44	2.05	0.63	1.85	3.23	3.37	-	0.53	G1/8"
1.500	5.28	2.32	2.68	2.28	0.63	1.85	3.46	3.60	-	0.53	G1/8"
1.625	5.51	2.52	2.87	2.48	0.63	1.85	3.70	3.84	-	0.53	G1/8"
1.750	5.51	2.52	2.87	2.48	0.63	1.85	3.70	3.84	-	0.53	G1/8"
1.875	5.47	2.64	2.91	2.60	0.63	1.85	3.70	3.84	-	0.53	G1/8"
2.000	5.91	2.91	3.27	2.87	0.63	1.85	4.09	4.23	-	0.53	G1/8"
2.125	5.91	2.91	3.27	2.87	0.63	1.85	4.09	4.23	-	0.53	G1/8"
2.250	6.30	3.11	3.58	3.07	0.63	1.85	4.49	4.63	-	0.53	G1/8"
2.375	6.30	3.11	3.58	3.07	0.63	1.85	4.49	4.63	-	0.53	G1/8"
2.500	7.64	3.62	4.02	3.54	0.87	2.20	5.20	5.34	5.43	0.69	G1/4"
2.625	7.76	3.74	4.13	3.66	0.87	2.20	5.31	5.45	5.55	0.69	G1/4"
2.750	7.76	3.74	4.13	3.66	0.87	2.20	5.31	5.45	5.55	0.69	G1/4"
2.875	7.99	3.94	4.45	3.90	0.87	2.20	5.55	5.69	5.79	0.69	G1/4"
3.000	8.15	4.13	4.57	4.06	0.87	2.20	5.67	5.81	5.91	0.69	G1/4"
3.125	8.15	4.13	4.57	4.06	0.87	2.20	5.67	5.81	5.91	0.69	G1/4"
3.250	8.39	4.33	4.80	4.29	0.87	2.20	5.94	6.08	6.18	0.69	G1/4"
3.375	8.50	4.53	4.92	4.45	0.87	2.20	6.06	6.20	6.30	0.69	G1/4"
3.500	8.50	4.53	4.92	4.45	0.87	2.20	6.06	6.20	6.30	0.69	G1/4"
3.625	8.74	4.72	5.16	4.65	0.87	2.20	6.30	6.44	6.54	0.69	G1/4"
3.750	8.74	4.72	5.16	4.65	0.87	2.20	6.30	6.44	6.54	0.69	G1/4"
3.875	9.02	5.00	5.43	4.92	0.87	2.20	6.57	6.71	6.81	0.69	G1/4"
4.000	9.13	5.16	5.24	5.08	0.87	2.20	6.69	6.83	6.93	0.69	G1/4"
4.125	9.13	5.16	5.24	5.08	0.87	2.20	6.69	6.83	6.93	0.69	G1/4"
4.250	9.29	5.35	5.83	5.28	0.87	2.20	6.85	6.99	7.09	0.69	G1/4"
4.375	9.53	5.55	5.63	5.47	0.87	2.20	7.09	7.23	7.32	0.69	G1/4"
4.500	9.53	5.55	5.63	5.47	0.87	2.20	7.09	7.23	7.32	0.69	G1/4"
4.625	9.76	5.71	6.22	5.67	0.87	2.20	7.32	7.46	7.56	0.69	G1/4"
4.750	9.76	5.71	6.22	5.67	0.87	2.20	7.32	7.46	7.56	0.69	G1/4"

